

Premier Gateway Phase 1B Secondary Plan

Project:

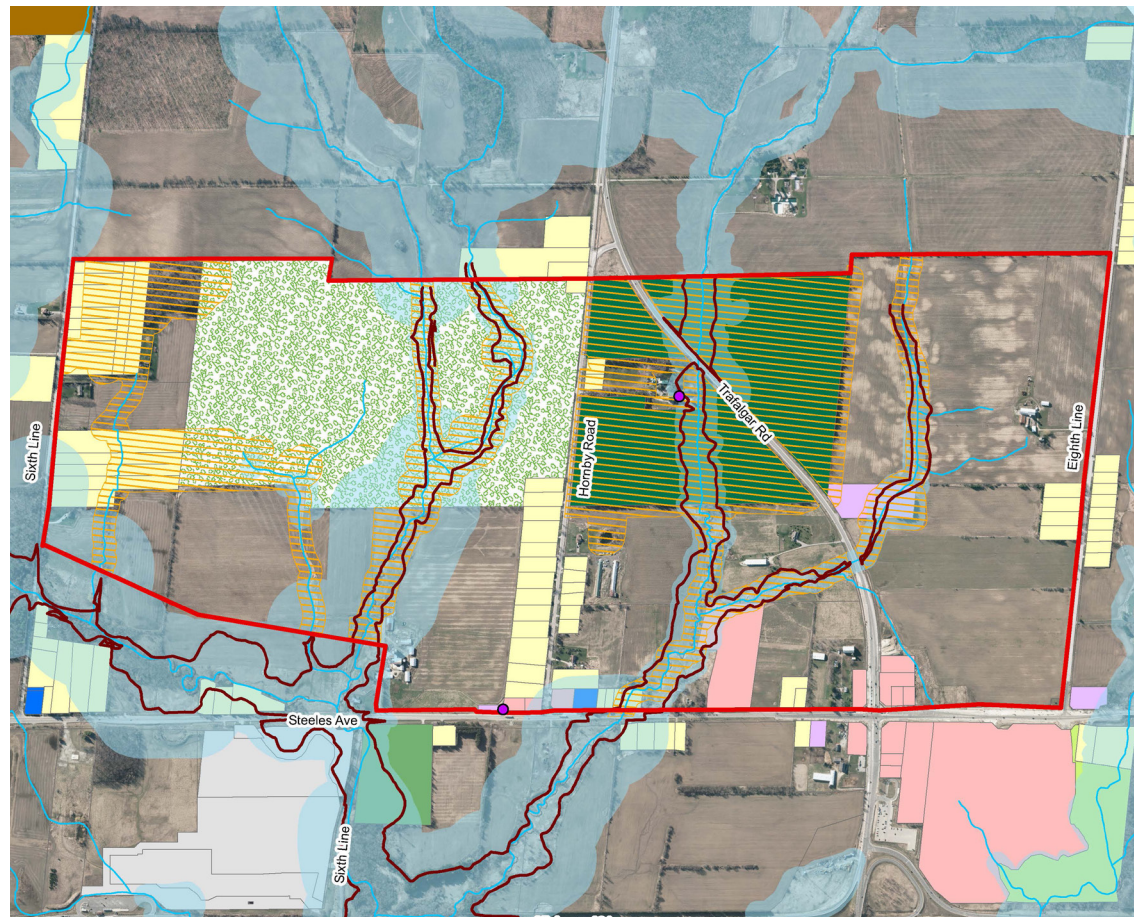
Employment Area
Secondary Plan

Client:

Town of Halton Hills

MSH Genuine Results

This ongoing study is designed to develop appropriate land use designations and policies for the Phase 1B Employment Area. It will also identify up to 75 hectares of land to be designated for employment and added to the Premier Gateway Employment Area. In addition to a Subwatershed Study, the development of the Secondary Plan will reflect ongoing technical background studies including transportation, heritage impact and functional servicing. A fiscal impact study will also be carried out. Extensive public consultation together with on going discussions with agencies will also provide a basis for the development of the Secondary Plan.



Current Influences

Macaulay Shiomi Howson Ltd
600 Annette Street
Toronto, ON M6S 2C4
T: 416-487-4101
F: 416-487-5489

471 Timothy Street
Newmarket, ON L3Y 1P9
T: 905-868-8230
F: 905-868-8501